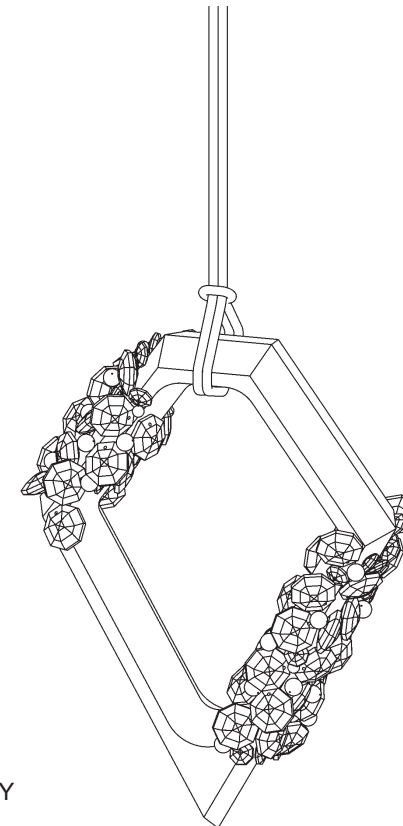


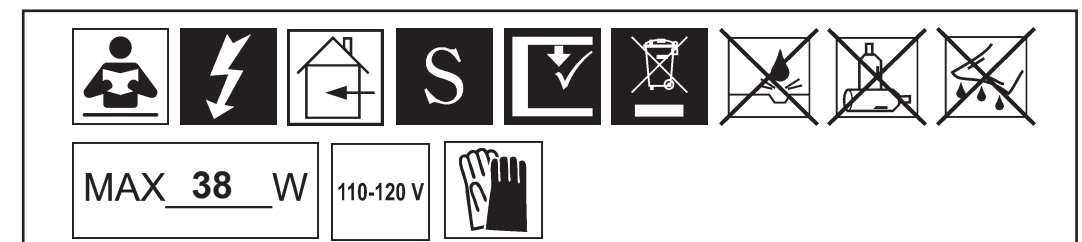
FOREVER
SCHONBEK

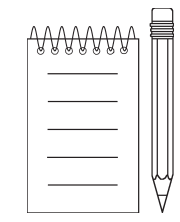
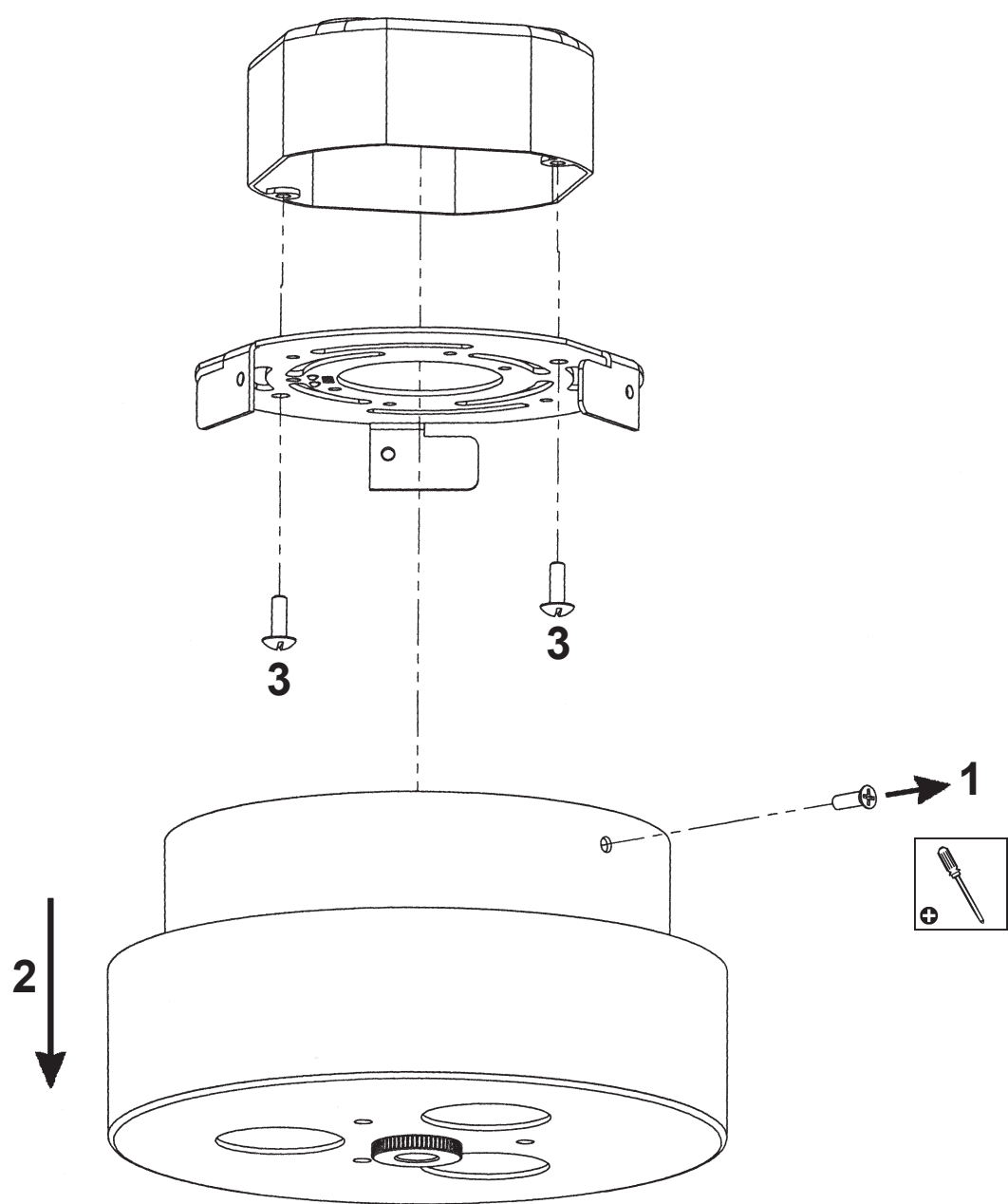
EMBELLISH
SJ6710-____R

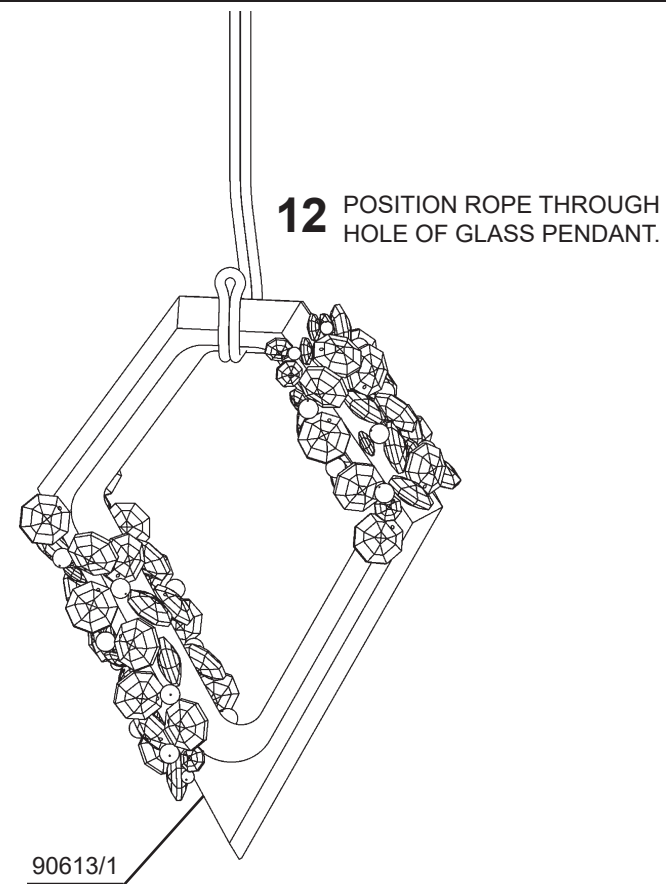


THIS DESIGN IS THE PROPRIETARY
TRADE DRESS/TRADEMARK OF
W SCHONBEK LLC.

FOREVER
SCHONBEK

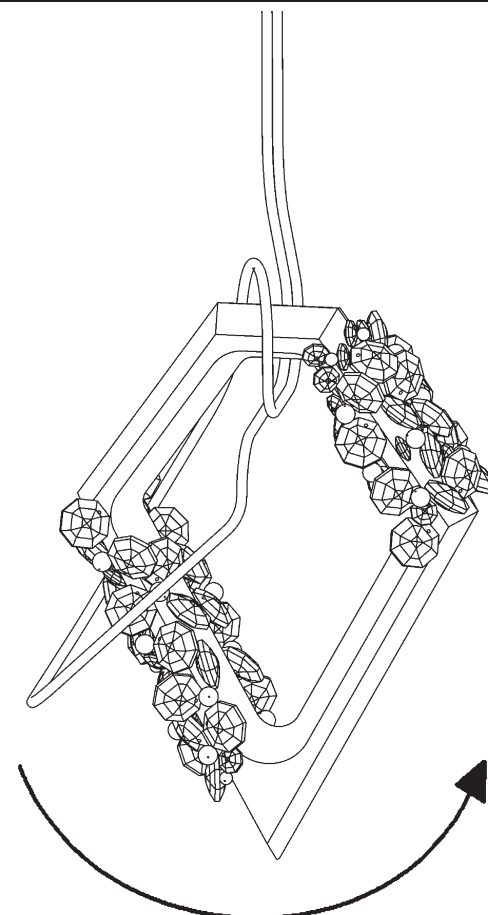
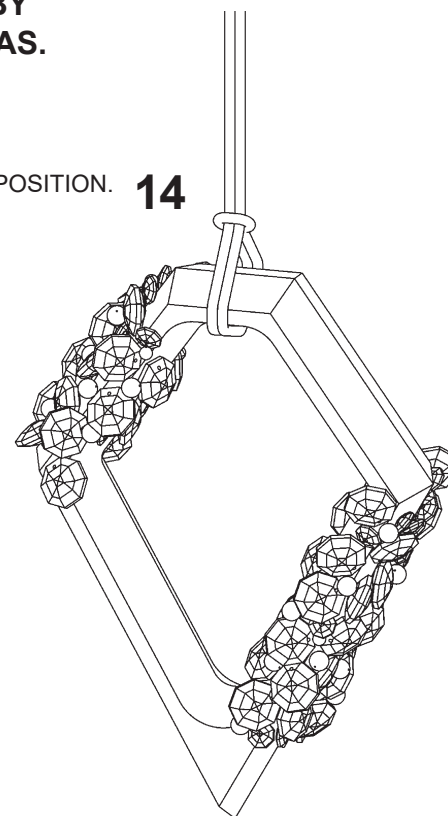




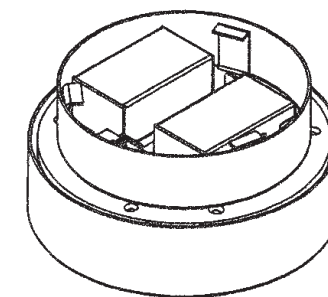


****ATTENTION****
DUE TO FRAGILE NATURE
OF PRODUCT, DO NOT
HANDLE FIXTURE BY
CRYSTALLIZED AREAS.

FINAL ROPE POSITION. **14**



13
 MAKE LOOP, AS SHOWN,
 AND PASS AROUND
 OUTSIDE OF GLASS
 PENDANT.



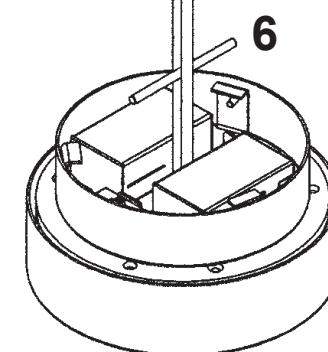
4

RPL-S23-***



****IMPORTANT NOTE****
 TIE DOUBLE KNOT.
 PULL TIGHTLY TO
 SECURE IN PLACE.

5



****IMPORTANT NOTE****
 ROPE MAY STRETCH
 SEVERAL INCHES
 DURING THE FIRST
 MONTH OF PRODUCT
 INSTALLATION. PLEASE
 KEEP IN MIND WHEN
 SETTING ROPE LENGTH.



